

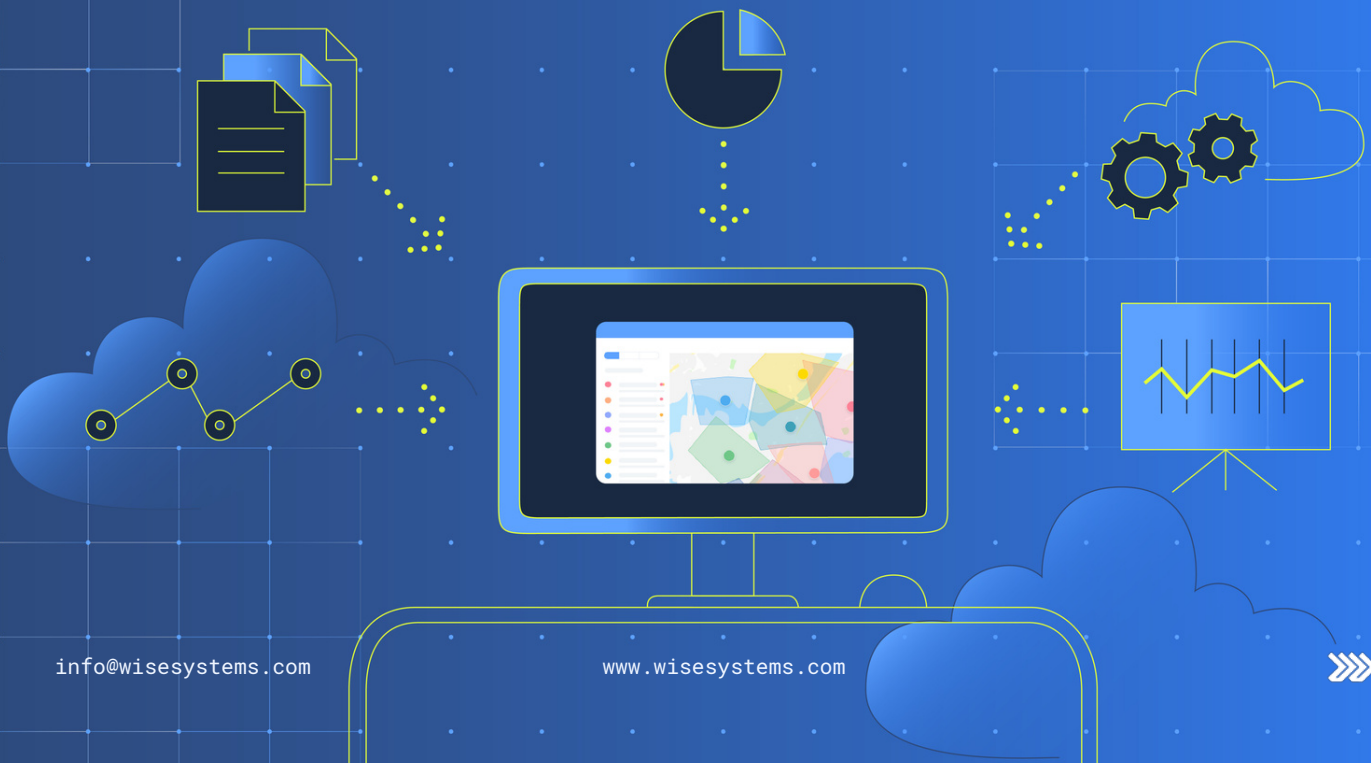
# Wise Systems and Geotab

## Wise Systems and Your Last-Mile Ecosystem

Your last-mile works better when the products and technologies you rely on work well together. And that's exactly what the Wise Systems delivery automation platform does by integrating with your mission-critical applications and hardware via **Wise Systems Connect**, a cloud-based service for quickly integrating with telematics, ERP, and OMS platforms.

**Connect** enables plug-and-play data exchange between customers' systems of record and the Wise Systems delivery automation platform to streamline end-to-end processes across last-mile operations. Connect includes:

- **The Wise Systems Telematics Adapter**, which standardizes integrations with a variety of third-party telematics devices, including electronic logging devices (ELDs) from industry leaders.
- **The Wise Systems Data Connector**, which integrates data from third-party Transportation Management Systems (TMS), Order Management Systems (OMS), Warehouse Management Systems (WMS), and Enterprise Resource Planning (ERP) systems.





## Wise Systems and Geotab

With the integration between Wise Systems and Geotab, a global leader in connected transportation solutions, your telematics data can be used to enhance your last-mile deliveries.

If you deliver products and services, including food, beverage, commercial, industrial, and parcel delivery and others, you can now leverage this plug-and-play integration and share route, stop, and telematics data to the Wise Systems platform. This integration:

- **Further streamlines** and automates the delivery process with automated data sharing across systems
- **Simplifies** drivers' in-cab experiences by eliminating the need for multiple device
- **Uses Geotab's telematics data** to enable more precise auto-arrive/depart capabilities within Dispatcher from Wise Systems
- **Syncs vehicle GPS location data** to provide even more precise vehicle location visibility and more precise ETAs to dispatchers, managers, and delivery recipients
- **Lays the groundwork** for fleet operations to leverage Geotab's data in the Wise Systems platform and gain visibility into driver hours of service, safety events, vehicle maintenance, fuel consumption, and vehicle idling events

Geotab is a global leader in connected transportation solutions providing telematics — vehicle and asset tracking — solutions to over 47,000 customers in 150 countries. Backed by a team of industry-leading data scientists and AI experts, Geotab is unlocking the power of data to understand real-time and predictive analytics — solving for today's challenges and tomorrow's world.

# The Wise Systems Platform

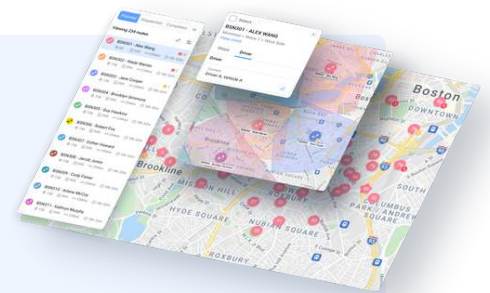
Trusted by the world's largest brands, the Wise Systems delivery automation platform streamlines every step of last-mile delivery operations and gives your drivers new levels of flexibility. For teams that want to balance customer experience while maximizing fleet utilization and efficiency, Wise Systems delivers a seamless last-mile experience and integrates with your existing technology stack to reduce fleet mileage and late deliveries, while giving your customers visibility into their parcel's progress and ETA.

At the core of Wise Systems' platform is the AI-driven Dynamic Optimization Engine (DOE) that continuously ingests data from your operations and makes real-time decisions. The DOE contains the route optimization algorithms that make intelligent routing decisions for fleets. It also houses the machine learning models that provide fleet performance improvements over time — benefits not previously available with traditional platforms.

The applications comprising the Wise Systems platform are used in a range of B2B and B2C industries and can be used together, or à la carte. Designed to support everyone in the last-mile delivery process, they include:

## > ROUTE PLANNER

Quickly and easily create cost-effective routes that meet your organization's priorities. Reduce time spent planning, improve vehicle utilization, and use the routing strategy that works best for your team.



## > DISPATCHER

Get real-time visibility and control with dispatching software that monitors route execution in real time and lets you adjust as needed. See every vehicle's location and status so that you can anticipate and respond quickly to any issues that may arise.



## > DRIVER

This easy-to-use mobile app (iOS and Android) gives drivers the tools they need to manage last-mile routes, site visits, deliveries, and pickups. With Driver from Wise Systems, your drivers have access to list and map views of stops, navigation apps, daily performance results, and more. (And, if your drivers already have an app, data from Wise Systems can be shared there, as well.)



## > MOBILE MANAGER

Successful deliveries require seamless communication with everyone involved in the process. The Mobile Manager app pushes delivery details to managers, merchandisers, and field reps, eliminating back-and-forth status texts and calls with drivers.



## > CUSTOMER PORTAL

If you're looking to differentiate your operation with customer service, Customer Portal delivers the experience your customers expect. It gives delivery recipients the ability to track their orders throughout the day with accurate real-time ETAs. They can also receive notifications that deliveries are imminent or delayed.



## > PERFORMANCE MANAGER

Performance Manager is a business intelligence application that lets managers perform detailed analyses of planned vs actual route performance, on-time delivery percentages, and more. Managers can easily compare Wise Systems' optimized route plans to dispatcher's final edits and driver actuals to see variances in time and distance across locations and drivers and identify areas for improvement.



## > STRATEGIC PLANNER

Strategic Planner is a long-term planning tool for managing operations and adapting to changes in customer base and order volume. It generates repeatable delivery schedules and territories that create alignment and predictability for distribution assets (drivers, vehicles, depots) with plans. It factors current and historical customer delivery schedules and order volumes, as well as requirements that respect driver, vehicle, and customer conditions.

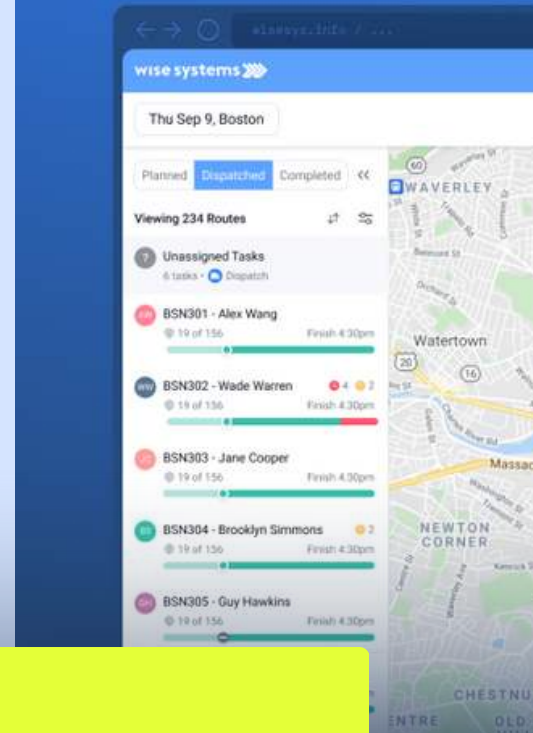


## > CONNECT

This subscription-based cloud service includes the Wise Systems Telematics Adapter and the Wise Systems Data Connector, and delivers rapid API-based integrations and faster time to value.



- > **Plan** the most efficient daily routes for your entire fleet using automation and simplified visualizations.
- > **Send** routes to drivers with the push of a button.
- > **Give** drivers the ability to manage routes and the power of automated adjustments to enhance on-time performance.
- > **Tackle** on-demand deliveries with automated, optimal-driver suggestions or selections.
- > **Provide** managers with the information they need to manage exceptions in real time, including historical and live driver tracking enabled by Geotab telematics devices.
- > **Deliver** better customer experiences with ETAs and real-time insight into delivery status.
- > **Get** completed order details to Finance faster for an accelerated order-to-cash process.



## About Wise Systems

Trusted by the world's largest brands, Wise Systems is a delivery automation platform that streamlines every step of last-mile delivery operations. For teams that want to strike the perfect balance between customer experience and operational efficiency, the Wise Systems platform continuously improves customer service, fleet efficiency, and reduces fleet mileage, carbon footprint, and late deliveries. Wise Systems is headquartered in Cambridge, MA. For more information, visit [www.wisesystems.com](http://www.wisesystems.com).

## About Geotab

Geotab is a global leader in connected transportation solutions providing telematics — vehicle and asset tracking — solutions to over 47,000 customers in 150 countries. Geotab connects to over 3.5 million vehicles and process more than 55 billion data points a day so that customers can make better decisions, increase productivity, have safer fleets, and achieve their sustainability goals. Geotab's open platform and Marketplace, offers hundreds of third-party solution options. Backed by a team of industry leading data scientists and AI experts, Geotab is unlocking the power of data to understand real-time and predictive analytics — solving for today's challenges and tomorrow's world. To learn more, visit [www.geotab.com](http://www.geotab.com), follow @GEOTAB on Twitter and LinkedIn or visit the Geotab Blog.

